



### COMPANY PROFILE

Goodsun is a comprehensive solution provider for solar mounting systems and solar module frames. Its production base is located in Yixing City, Jiangsu Province near Shanghai. There are 2 workshops in its production base, one is for the manufacturing of Aluminum raw materials, the other for the finishing of mounting systems and frames.

Thanks to powerful technical support and strict production standard, GoodSun products have won the recognition from our clients worldwide.



地址: 宜兴经济技术开发区庆源大道南侧  
电话: +86 510 81731999  
网址: <http://gsolar.com.cn>

Company address: No.1-2 Qingyuan Ave, Yixing Economic Development Zone, Yixing City, Jiangsu Province, China.  
Tel: +86 510 81731999  
<http://gsolar.com.cn>



### 公司简介 COMPANY INTRODUCTION

江苏固尚新能源有限公司是一家集技术咨询、设计研发、制造加工、销售、安装、维护为一体的综合性光伏支架和太阳能组件边框的解决方案供应商。

我司座落于美丽太湖之滨的国家级开发区——江苏宜兴经济技术开发区，工厂分为挤压铝型材制造及光伏支架、太阳能边框精加工两个厂区，总占地面积达五万平米，是设计规模为配套600MW光伏支架和400MW太阳能组件边框年产能的现代化制造企业。

公司依托自有的完整的铝合金产品生产线，从挤压成型、表面处理，到自动化的精加工，产品结构完整、生产管理严谨、服务体系优良，使我司的产品已在业界获得广泛认可，并销往世界各地。

公司致力于应用和推广绿色新能源，通过技术研发，使生产效率、产品质量和技术水平得到不断提升，增强企业的核心竞争力。全面实施以科技实力支持产业创新的发展策略，积极研制开发新品，追求与客户共赢的发展模式，我们可以为每一位客户度身定制产品，提供真正适应您需求的优质产品、解决方案和满意服务。



### 固尚铝合金支架特点及优势



- A** 重量仅为钢材的1/3, 适用于各种荷载能力的屋面  
1/3 weight of steel
- B** 耐腐蚀、不生锈  
Anti-corrosion in 25 years more
- C** 专利产品, 安装快, 施工效率提高20%以上  
Patented structure, Installation efficiency+20%
- D** 无需焊接, 无低温焊缝脆裂风险  
No risk for cracks of welding seam under low temp.
- E** 高韧性、高强度  
High Flexibility, High Rigidity
- F** 导电性佳, 防雷性能优异  
Excellent performance of conductivity and grounding
- G** 外观颜色多样可定制  
Color options available
- H** 环保易回收, 残值高  
Recyclable, High residual value

铝合金支架优势  
GoodSun  
Product Advantage



### 部分资质荣誉



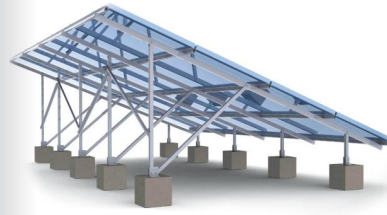


## 固尚新能源合金光伏支架的优势

我司的铝合金光伏支架系统，均为自主研发生产，设计更为可靠合理，交货响应速度更快。利用不同的模具，通过挤压工艺获取各种不同截面形状的铝型材产品，再通过低损耗的锯切、折弯、冲钻等工艺来加工成所需的各种规格产品。使光伏现场安装更具有模块化组装优势：效率高、速度快，无需焊接，同时避免了低温条件下钢铁焊接部分脆而易碎的弱点。铝合金产品由于采用合金形式，内部铝、锰、硅含量高，使产品具有高强度、高硬度、高韧性等多种优质力学性能，并且重量仅有钢材的1/3，环保易回收，且更适用于屋顶、水面等光伏电站。同时，铝合金具有优良的导电性能，能更好地传导光伏系统产生的弱电。我们的合金支架产品，有多种表面处理工艺，如：本色阳极氧化、喷砂氧化、黑色氧化、多色粉末喷涂等，除了达到几倍于钢材的耐腐蚀性能（不生锈、不腐烂、不变色）外，还可以有各种不同外观可供选择，有效避免与建筑物设计不协调的突兀感和相关光污染。



## 单 / 多排铝合金支架 SINGLE / MULTI ROWS MOUNTING SYSTEM



**安装地点：**户外、开阔地面 / 平面屋顶  
**最大风速：**55m/s  
**最大雪载：**1.4KN/m<sup>2</sup>  
**主材料：**AL6005-T5铝/AL6063-T5铝  
**辅材：**不锈钢304  
**特点：**适用性强、简单方便、性价比高

**Mounting type:** Ground/Flat concrete roof  
**Max. wind load:** 55m/s  
**Max. snow load:** 1.4KN/m<sup>2</sup>  
**Main part material:** Anodized Aluminum AL6005-T5 or AL6063-T5  
**Fastener material:** SUS304  
**Feature:** High-strength, Anti-corrosion, Easy installation



03/04

## 单 / 多排铝合金支架 SINGLE / MULTI ROWS MOUNTING SYSTEM



雪下的支架 Mounting system after heavy snow



单排支架 Portrait Single row



双排支架 Portrait 2 rows



多排支架 Portrait multi rows



## 车棚支架系统 CARPORT MOUNTING SYSTEM



**角度：**5~25°  
**安装地点：**地面 / 水泥平面  
**最大风速：**35m/s  
**最大雪载：**0.85KN/m<sup>2</sup>  
**主材料：**AL6005-T5铝 / AL6063-T5铝  
**辅材：**不锈钢304  
**特点：**结构简单、易施工安装、耐腐蚀、停车节电两不误

**Angle:** 5~25°  
**Mounting type:** Ground / Cement plane  
**Max. Wind load:** 35m/s  
**Max. Snow load:** 0.85KN/m<sup>2</sup>  
**Main part material:** Anodized Aluminum AL6005-T5 or AL6063-T5  
**Fastener material:** SUS304  
**Feature:** Simple structure, Easy installation, Anti-corrosion, Saving bills while parking



05/06



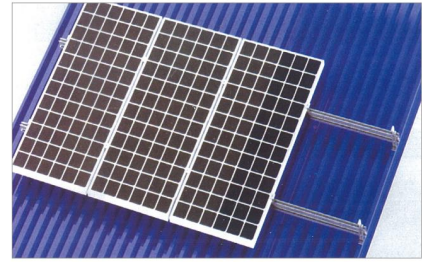
## 渔光互补支架系统 FISHERY MOUNTING SYSTEM



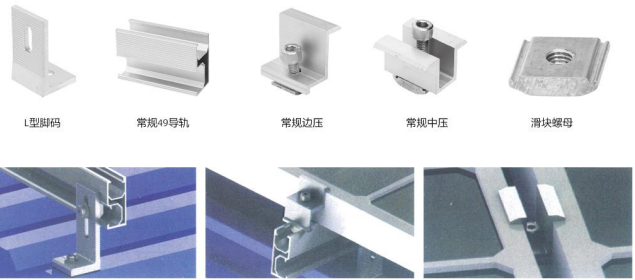
**安装地点:** 鱼塘  
**最大风速:** 45m/s  
**最大雪载:** 1.4KN/m<sup>2</sup>  
**主材料:** AL6005-T5铝 / AL6063-T5铝  
**辅材料:** 不锈钢304  
**特点:** 一地多用, 增加收益, 提高土地利用率  
 Mounting type: Fishpond  
 Max. Wind load: 45m/s  
 Max.Snow load: 1.4KN/m<sup>2</sup>  
 Main part material: Anodized Aluminum AL6005-T5 or AL6063-T5  
 Fastener material: SUS304  
 Feature: Improve the productivity of fishpond



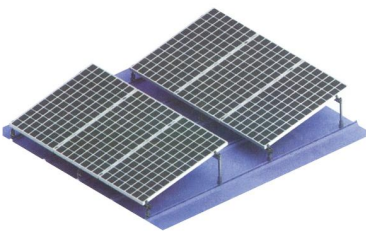
## L型角支架系统 L-FEET MOUNTING SYSTEM



**安装地点:** 彩钢瓦  
**最大风速:** 40m/s  
**最大雪载:** 0.55KN/m<sup>2</sup>  
**主材料:** AL6005-T5铝 / AL6063-T5铝  
**辅材料:** 不锈钢304  
**优点:** 美观、重量轻、耐腐蚀  
 Mounting type: Trapeziode metal sheet roof  
 Max. Wind load: 40m/s  
 Max.Snow load: 0.55KN/m<sup>2</sup>  
 Main part material: Anodized Aluminum AL6005-T5 or AL6063-T5  
 Fastener material: SUS304  
 Feature: Delicate apperance, light weight, anti-corrosion



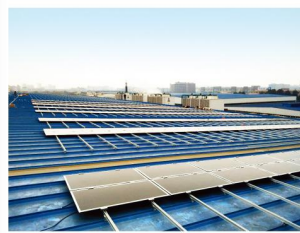
## 夹具型支架系统 CLAMP MOUNTING SYSTEM



**安装地点:** 彩钢瓦  
**最大风速:** 40m/s  
**最大雪载:** 0.55KN/m<sup>2</sup>  
**主材料:** AL6005-T5铝 / AL6063-T5铝  
**辅材料:** 不锈钢304  
**优点:** 美观、重量轻、耐腐蚀  
 Mounting type: Metal Sheet Roof  
 Max. Wind load: 40m/s  
 Max. Snow load: 0.55KN/m<sup>2</sup>  
 Main part material: Anodized Aluminum AL6005-T5 or AL6063-T5  
 Fastener material: SUS304  
 Feature: Delicate apperance, light weight, anti-corrosion



## 夹具型支架系统 CLAMP MOUNTING SYSTEM



直立锁边夹具 Non-penetration clamp

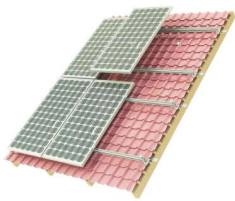


梯形瓦夹具 Trapezoid clamp



角驰夹具 None-penetrating clamp

## 瓦面支架系统 TILE ROOF MOUNTING SYSTEM



**安装地点:** 琉璃瓦、陶瓷瓦  
**最大风速:** 45m/s  
**最大雪载:** 0.55KN/m<sup>2</sup>  
**主材料:** AL6005-T5铝 / AL6063-T5铝  
**辅材:** 不锈钢304  
**特点:** 美观、重量轻、耐腐蚀  
**Mounting type:** tile roof  
**Max. wind load:** 45m/s  
**Max.snow load:** 0.55KN/m<sup>2</sup>  
**Main part material:** Anodized Aluminum AL6005-T5 or AL6063-T5  
**Fastener material:** SUS304  
**Feature:** Delicate appearance, light weight, anti-corrosion



常规49号规    常规49号连接件    常规中压    常规边压  
 直立单调节挂钩    侧立单调节挂钩    平行单调节挂钩    平行双调节挂钩    木梁平行挂钩



## 支架配件 STRUCTURE ACCESSORIES

1	39导轨 Rail 39	11	常规中压 Normal middle clamp	21	直立锁边夹具 B-Clamp	31	滑块螺母 Slide nut
2	47导轨 Rail 47	12	短交压块 Cross clamp	22	L型角码 L-foot	32	自攻螺丝 Self-drilling bolt
3	50导轨 Rail 50	13	快速边压 Fast end clamp	23	双坡边压 End clamp for double-pitch module	33	防震垫片 Grounding clip
4	70导轨 Rail 70	14	快速中压 Fast middle clamp	24	双坡中压 Middle clamp for double-pitch module	34	不锈钢螺栓 Bolts
5	常规49号规 Rail 49	15	前底座 Front base	25	侧立单调节挂钩 Side roof hook	35	螺栓套组 Bolts&Nuts
6	39连接件 39 connector	16	后底座 Rear base	26	直立单调节挂钩 Straight roof hook	36	膨胀螺栓 Expansion nuts
7	47/50连接件 47/50 connector	17	立柱 Leg	27	平行单调节挂钩 A-Parallel roof hook	37	T型螺栓套组 T-bolt
8	70连接件 70 connector	18	纵梁 Longitudinal beam	28	平行双调节挂钩 B-Parallel roof hook	38	EPDM防水卷材 Water-proof mat
9	常规49号连接件 49 connector	19	梯形瓦夹具 Trapezoid clamp	29	木梁平行挂钩 Parallel roof hook for wood beam	39	U型螺栓 U bolt
10	常规边压 Normal end clamp	20	角码夹具 A clamp	30	翼型螺母 Wing nut		

## 主要支架型材截面图 STRUCTURE SECTION DRAWING

Series	Mounting Structure	Model	ZJ-01	Series	Mounting Structure	Model	ZJ-02	Series	Mounting Structure	Model	ZJ-03
Extruding Machine	1320T	Extruding Machine	800T	Extruding Machine	1320T	Extruding Machine	800T	Extruding Machine	1320T	Extruding Machine	800T
Estimated Weight	3.144kg/m	Estimated Weight	1.514kg/m	Estimated Weight	2.514kg/m	Estimated Weight	1.514kg/m	Estimated Weight	2.514kg/m	Estimated Weight	1.514kg/m
Series	Mounting Structure	Model	ZJ-04	Series	Mounting Structure	Model	ZJ-05	Series	Mounting Structure	Model	ZJ-06
Extruding Machine	1320T	Extruding Machine	800T	Extruding Machine	800T	Extruding Machine	800T	Extruding Machine	1320T	Extruding Machine	800T
Estimated Weight	1.664kg/m	Estimated Weight	0.961kg/m	Estimated Weight	0.722kg/m	Estimated Weight	0.961kg/m	Estimated Weight	2.045kg/m	Estimated Weight	3.525kg/m
Series	Mounting Structure	Model	ZJ-07	Series	Mounting Structure	Model	ZJ-08	Series	Mounting Structure	Model	ZJ-09
Extruding Machine	1320T	Extruding Machine	800T	Extruding Machine	800T	Extruding Machine	800T	Extruding Machine	1320T	Extruding Machine	800T
Estimated Weight	1.344kg/m	Estimated Weight	0.659kg/m	Estimated Weight	0.704kg/m	Estimated Weight	0.659kg/m	Estimated Weight	2.964kg/m	Estimated Weight	0.654kg/m
Series	Mounting Structure	Model	ZJ-10	Series	Mounting Structure	Model	ZJ-11	Series	Mounting Structure	Model	ZJ-12
Extruding Machine	800T	Extruding Machine	800T	Extruding Machine	800T	Extruding Machine	800T	Extruding Machine	1000T	Extruding Machine	800T
Estimated Weight	0.919kg/m	Estimated Weight	0.517kg/m	Estimated Weight	0.294kg/m	Estimated Weight	0.919kg/m	Estimated Weight	1.294kg/m	Estimated Weight	0.654kg/m
Series	Mounting Structure	Model	ZJ-13	Series	Mounting Structure	Model	ZJ-14	Series	Mounting Structure	Model	ZJ-15
Extruding Machine	800T	Extruding Machine	800T	Extruding Machine	800T	Extruding Machine	800T	Extruding Machine	800T	Extruding Machine	800T
Estimated Weight	0.535kg/m	Estimated Weight	0.625kg/m	Estimated Weight	0.757kg/m	Estimated Weight	0.625kg/m	Estimated Weight	0.665kg/m	Estimated Weight	0.787kg/m
Series	Mounting Structure	Model	ZJ-16	Series	Mounting Structure	Model	ZJ-17	Series	Mounting Structure	Model	ZJ-18
Extruding Machine	800T	Extruding Machine	800T	Extruding Machine	800T	Extruding Machine	800T	Extruding Machine	1320T	Extruding Machine	800T
Estimated Weight	0.414kg/m	Estimated Weight	0.852kg/m	Estimated Weight	0.579kg/m	Estimated Weight	0.414kg/m	Estimated Weight	1.684kg/m	Estimated Weight	1.411kg/m
Series	Mounting Structure	Model	ZJ-19	Series	Mounting Structure	Model	ZJ-20	Series	Mounting Structure	Model	ZJ-21
Extruding Machine	800T	Extruding Machine	800T	Extruding Machine	800T	Extruding Machine	800T	Extruding Machine	1000T	Extruding Machine	800T
Estimated Weight	0.655kg/m	Estimated Weight	0.265kg/m	Estimated Weight	0.852kg/m	Estimated Weight	0.655kg/m	Estimated Weight	1.224kg/m	Estimated Weight	0.609kg/m
Series	Mounting Structure	Model	ZJ-22	Series	Mounting Structure	Model	ZJ-23	Series	Mounting Structure	Model	ZJ-24
Extruding Machine	800T	Extruding Machine	800T	Extruding Machine	800T	Extruding Machine	800T	Extruding Machine	800T	Extruding Machine	800T
Estimated Weight	0.489kg/m	Estimated Weight	0.825kg/m	Estimated Weight	0.254kg/m	Estimated Weight	0.489kg/m	Estimated Weight	0.263kg/m	Estimated Weight	0.381kg/m

## 主要支架型材截面图 STRUCTURE SECTION DRAWING

Series	Mounting Structure	Model	ZJ-25	Series	Mounting Structure	Model	ZJ-26	Series	Mounting Structure	Model	ZJ-27
Extruding Machine	800T	Extruding Machine	800T	Extruding Machine	800T	Extruding Machine	1320T	Extruding Machine	1320T	Extruding Machine	1320T
Estimated Weight	0.709kg/m	Estimated Weight	0.594kg/m	Estimated Weight	3.26kg/m	Estimated Weight	2.027kg/m	Estimated Weight	2.157kg/m	Estimated Weight	2.783kg/m
Series	Mounting Structure	Model	ZJ-28	Series	Mounting Structure	Model	ZJ-29	Series	Mounting Structure	Model	ZJ-30
Extruding Machine	1320T	Extruding Machine	1320T	Extruding Machine	1320T	Extruding Machine	1320T	Extruding Machine	1320T	Extruding Machine	1320T
Estimated Weight	2.045kg/m	Estimated Weight	3.525kg/m	Estimated Weight	3.26kg/m	Estimated Weight	3.26kg/m	Estimated Weight	3.26kg/m	Estimated Weight	3.26kg/m
Series	Mounting Structure	Model	ZJ-31	Series	Mounting Structure	Model	ZJ-32	Series	Mounting Structure	Model	ZJ-33
Extruding Machine	1320T	Extruding Machine	1320T	Extruding Machine	800T	Extruding Machine	1320T	Extruding Machine	1320T	Extruding Machine	1320T
Estimated Weight	2.964kg/m	Estimated Weight	0.719kg/m	Estimated Weight	2.157kg/m	Estimated Weight	2.157kg/m	Estimated Weight	2.157kg/m	Estimated Weight	2.157kg/m
Series	Mounting Structure	Model	ZJ-34	Series	Mounting Structure	Model	ZJ-35	Series	Mounting Structure	Model	ZJ-36
Extruding Machine	1000T	Extruding Machine	800T	Extruding Machine	800T	Extruding Machine	1000T	Extruding Machine	1000T	Extruding Machine	1000T
Estimated Weight	1.294kg/m	Estimated Weight	0.654kg/m	Estimated Weight	0.654kg/m	Estimated Weight	2.783kg/m	Estimated Weight	2.783kg/m	Estimated Weight	2.783kg/m
Series	Mounting Structure	Model	ZJ-37	Series	Mounting Structure	Model	ZJ-38	Series	Mounting Structure	Model	ZJ-39
Extruding Machine	800T	Extruding Machine	800T	Extruding Machine	800T	Extruding Machine	800T	Extruding Machine	800T	Extruding Machine	800T
Estimated Weight	0.665kg/m	Estimated Weight	0.787kg/m	Estimated Weight	0.675kg/m	Estimated Weight	0.675kg/m	Estimated Weight	0.675kg/m	Estimated Weight	0.675kg/m
Series	Mounting Structure	Model	ZJ-40	Series	Mounting Structure	Model	ZJ-41	Series	Mounting Structure	Model	ZJ-42
Extruding Machine	1320T	Extruding Machine	1320T	Extruding Machine	1320T	Extruding Machine	1320T	Extruding Machine	1320T	Extruding Machine	1320T
Estimated Weight	1.684kg/m	Estimated Weight	1.411kg/m	Estimated Weight	1.154kg/m	Estimated Weight	1.154kg/m	Estimated Weight	1.154kg/m	Estimated Weight	1.154kg/m
Series	Mounting Structure	Model	ZJ-43	Series	Mounting Structure	Model	ZJ-44	Series	Mounting Structure	Model	ZJ-45
Extruding Machine	1000T	Extruding Machine	800T	Extruding Machine	800T	Extruding Machine	800T	Extruding Machine	800T	Extruding Machine	800T
Estimated Weight	1.224kg/m	Estimated Weight	0.609kg/m	Estimated Weight	0.654kg/m	Estimated Weight	0.654kg/m	Estimated Weight	0.654kg/m	Estimated Weight	0.654kg/m
Series	Mounting Structure	Model	ZJ-46	Series	Mounting Structure	Model	ZJ-47	Series	Mounting Structure	Model	ZJ-48
Extruding Machine	800T	Extruding Machine	800T	Extruding Machine	800T	Extruding Machine	800T	Extruding Machine	800T	Extruding Machine	800T
Estimated Weight	0.263kg/m	Estimated Weight	0.381kg/m	Estimated Weight	0.671kg/m	Estimated Weight	0.671kg/m	Estimated Weight	0.671kg/m	Estimated Weight	0.671kg/m



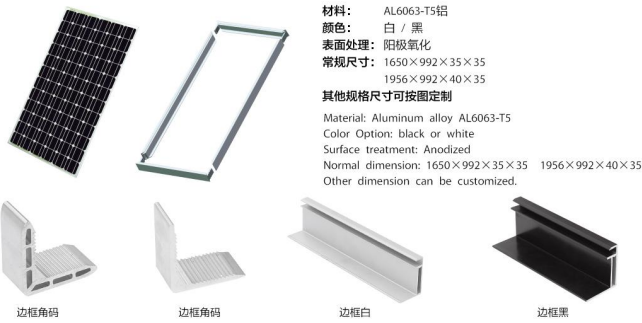
## 主要支架型材截面图 STRUCTURE SECTION DRAWING

Series: ZJ-49 Model: ZJ-49 Extruding Machine: 800T Estimated Weight: 0.657kg/m	Series: ZJ-50 Model: ZJ-50 Extruding Machine: 800T Estimated Weight: 0.702kg/m	Series: ZJ-51 Model: ZJ-51 Extruding Machine: 800T Estimated Weight: 0.751kg/m
Series: ZJ-52 Model: ZJ-52 Extruding Machine: 800T Estimated Weight: 0.589kg/m	Series: ZJ-53 Model: ZJ-53 Extruding Machine: 800T Estimated Weight: 0.517kg/m	Series: ZJ-54 Model: ZJ-54 Extruding Machine: 800T Estimated Weight: 0.394kg/m
Series: ZJ-55 Model: ZJ-55 Extruding Machine: 1320T Estimated Weight: 7.691kg/m	Series: ZJ-56 Model: ZJ-56 Extruding Machine: 800T Estimated Weight: 0.411kg/m	Series: ZJ-57 Model: ZJ-57 Extruding Machine: 800T Estimated Weight: 0.588kg/m
Series: ZJ-58 Model: ZJ-58 Extruding Machine: 800T Estimated Weight: 0.728kg/m	Series: ZJ-59 Model: ZJ-59 Extruding Machine: 800T Estimated Weight: 0.585kg/m	Series: ZJ-60 Model: ZJ-60 Extruding Machine: 1000T Estimated Weight: 1.285kg/m
Series: ZJ-61 Model: ZJ-61 Extruding Machine: 800T Estimated Weight: 0.7kg/m	Series: ZJ-62 Model: ZJ-62 Extruding Machine: 800T Estimated Weight: 0.799kg/m	Series: ZJ-63 Model: ZJ-63 Extruding Machine: 800T Estimated Weight: 0.597kg/m
Series: ZJ-64 Model: ZJ-64 Extruding Machine: 800T Estimated Weight: 0.919kg/m	Series: ZJ-77 Model: ZJ-77 Extruding Machine: 1000T Estimated Weight: 1.037kg/m	Series: ZJ-78 Model: ZJ-78 Extruding Machine: 1320T Estimated Weight: 5.418kg/m
Series: ZJ-79 Model: ZJ-79 Extruding Machine: 800T Estimated Weight: 0.972kg/m	Series: ZJ-80 Model: ZJ-80 Extruding Machine: 800T Estimated Weight: 0.766kg/m	Series: ZJ-81 Model: ZJ-81 Extruding Machine: 1320T Estimated Weight: 1.614kg/m
Series: ZJ-83 Model: ZJ-83 Extruding Machine: 800T Estimated Weight: 0.594kg/m	Series: ZJ-84 Model: ZJ-84 Extruding Machine: 800T Estimated Weight: 0.622kg/m	Series: ZJ-85 Model: ZJ-85 Extruding Machine: 800T Estimated Weight: 0.632kg/m

## 主要支架型材截面图 STRUCTURE SECTION DRAWING

Series: ZJ-86 Model: ZJ-86 Extruding Machine: 600T Estimated Weight: 0.138kg/m	Series: ZJ-87 Model: ZJ-87 Extruding Machine: 800T Estimated Weight: 1.027kg/m	Series: ZJ-88 Model: ZJ-88 Extruding Machine: 800T Estimated Weight: 0.472kg/m
Series: ZJ-89 Model: ZJ-89 Extruding Machine: 800T Estimated Weight: 0.874kg/m	Series: ZJ-90 Model: ZJ-90 Extruding Machine: 1000T Estimated Weight: 1.532kg/m	Series: ZJ-91 Model: ZJ-91 Extruding Machine: 1000T Estimated Weight: 1.382kg/m
Series: ZJ-92 Model: ZJ-92 Extruding Machine: 800T Estimated Weight: 0.686kg/m	Series: ZJ-93 Model: ZJ-93 Extruding Machine: 800T Estimated Weight: 0.685kg/m	Series: ZJ-94 Model: ZJ-94 Extruding Machine: 800T Estimated Weight: 0.606kg/m
Series: ZJ-95 Model: ZJ-95 Extruding Machine: 800T Estimated Weight: 0.566kg/m	Series: ZJ-96 Model: ZJ-96 Extruding Machine: 1000T Estimated Weight: 1.071kg/m	Series: ZJ-97 Model: ZJ-97 Extruding Machine: 800T Estimated Weight: 0.657kg/m
Series: ZJ-98 Model: ZJ-98 Extruding Machine: 800T Estimated Weight: 0.888kg/m	Series: ZJ-99 Model: ZJ-99 Extruding Machine: 800T Estimated Weight: 0.565kg/m	Series: ZJ-100 Model: ZJ-100 Extruding Machine: 1000T Estimated Weight: 0.927kg/m

## 边框 / 主要边框型材截面图 SOLAR MODULE FRAME



Series: JC-42 Model: JC-42 Wall Thickness: 1.5mm Estimated Weight: 0.443kg/m	Series: JC-44 Model: JC-44 Wall Thickness: 1.5mm Estimated Weight: 0.449kg/m	Series: JC-201 Model: JC-201 Wall Thickness: 1.6mm Estimated Weight: 0.462kg/m
Series: JC-204 Model: JC-204 Wall Thickness: 1.4mm Estimated Weight: 0.383kg/m	Series: JC-206 Model: JC-206 Wall Thickness: 1.4mm Estimated Weight: 0.448kg/m	Series: JC-203 Model: JC-203 Wall Thickness: 1.5mm Estimated Weight: 0.469kg/m
Series: JC-276 Model: JC-276 Wall Thickness: 1.3mm Estimated Weight: 0.444kg/m	Series: JC-34 Model: JC-34 Wall Thickness: 1.8mm Estimated Weight: 0.571kg/m	Series: JC-150 Model: JC-150 Wall Thickness: 1.5mm Estimated Weight: 0.561kg/m
Series: JC-195 Model: JC-195 Wall Thickness: 1.7mm Estimated Weight: 0.558kg/m	Series: JC-30 Model: JC-30 Wall Thickness: 4.0mm Estimated Weight: 0.742kg/m	Series: JC-268 Model: JC-268 Wall Thickness: 8.0mm Estimated Weight: 1.061kg/m
Series: JC-149 Model: JC-149 Wall Thickness: 1.8mm Estimated Weight: 1.034kg/m	Series: JC-236 Model: JC-236 Wall Thickness: 1.5mm Estimated Weight: 0.447kg/m	

## 项目案例 PROJECT CASE

